



**REDLINE**

highlights

## REFINER EMME



With environmental laws and new requirements of steelmill to penalize the supply of collection scrap, light scrap and household appliances as they are. The justified demand for scrap free from the presence of pollutants, requires a shredding and selection system that, in terms of size, operating space, personnel employed, installed power, production and operating costs, fits easily into current operation of a scrap yard and guarantees a supply of high quality raw materials. **TAURUS REDLINE “M105 - M106 - M116”**, are machines that adapt your facility to today's needs, equipped with a sturdy anti-vibration support frame (patented), installs simply resting on the ground, does not transmit vibrations, does not need foundations, easy to manage, easy to reposition, which costs nothing to move it because it leaves everything as it was and does not require changes. The module “**M105 - M106 - M116**” is a horizontal axis hammer refiner with lateral loading. It has been designed and built to enhance, through grinding and sorting, the “poor” scrap from: collected scrap, light scrap, WEEE, large and small household appliances, valves, crankcases, engines from end-of-life vehicles, tins, cans, spray cans, etc.



TAURUS by C&G SRL  
Via Laghetto, 14 - 21020  
Mornago (VA-IT)



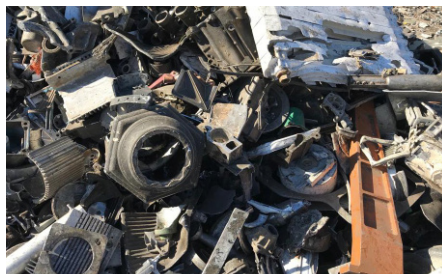
T. +39 0332947242  
info@taurusweb.it  
www.taurusweb.it



**REDLINE**

highlights

REFINER EMME		MA105	MA106	MA116
Feeding chamber width	mm	930	1220	1220
Rotor diameter	Ømm	1010	1010	1150
Hammers/stars	n.	8/4	8/8	8/8
Electric motor	kw	250	315	355
Ejection door		o	o	o
<b>LAYOUT</b>				
FIRST UNIT: feeding conveyor				
MID UNIT: hopper for feeding conveyor				
BOTTOM UNIT: vibrating plate				
END UNIT: magnetic drum deferring				
Electronic control and power system				
<b>OPTIONS</b>				
Dust collection system				
Soundproofing system				



INDICATIVE OUTPUT		MA105	MA106	MA116
	<b>kw</b>	<b>250</b>	<b>315</b>	<b>355</b>
Collected scrap (preshredded)	t/h	< 6	< 8	< 12
Scrap from incinerators	t/h	< 2.5	< 3.5	< 6
Cans	t/h	< 4	< 4.5	< 6
Household and office appliances (preshredded)	t/h	< 4	< 5	< 6
Small household appliances	t/h	< 4	< 5	< 6
Small Office appliances	t/h	< 4	< 5	< 6
Computer and electronic boards	t/h	< 4	< 5	< 6
Engine parts and aluminium crankcases	t/h	< 4	< 5	< 8

